

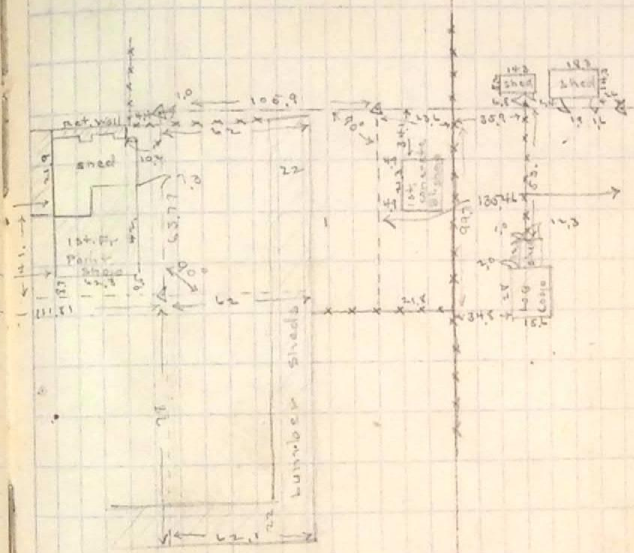
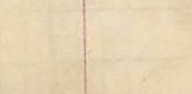
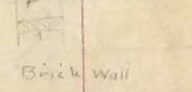
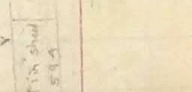
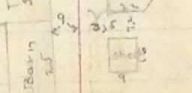
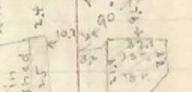
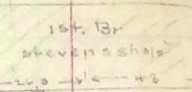
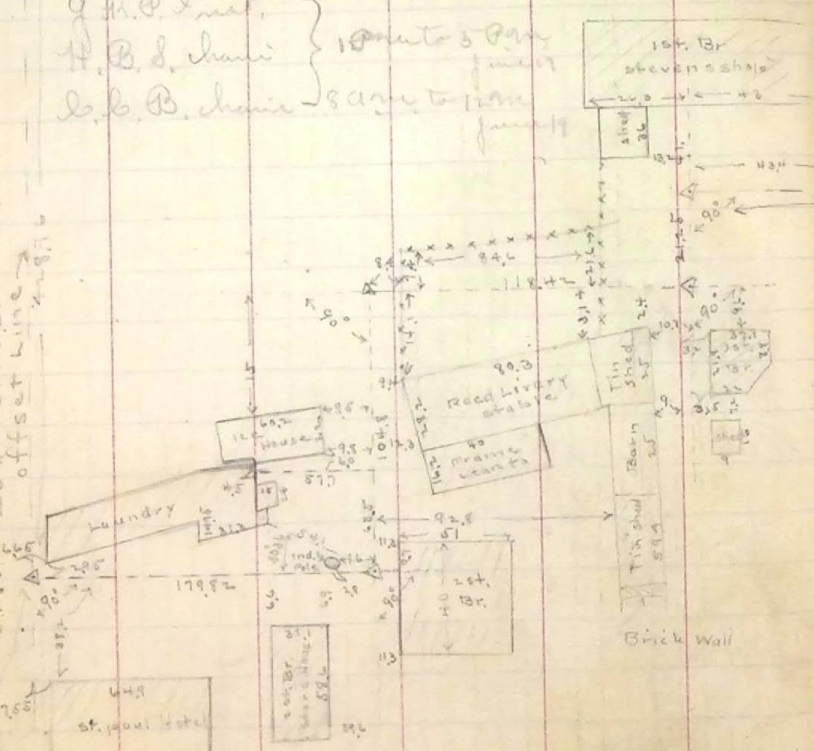
June 17 1905

Adams Location of Buildings in Blk. 17 Plat A

Preliminary to showing an extension  
south for Canal Alley.

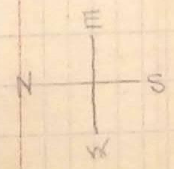
G. M. P. Int. }  
H. B. S. Chan } 10 units 5 per  
L. B. B. Chan } same to 12 per

offset line  
ctr. of 25th Street  
offset line  
35 ft  
10 ft offset west  
Washington Ave



Mt. Adams 41  
↑

547.5 ft as chained  
ctr. of 25th Street  
786.91 as chained



↓  
Mt. Adams  
Wash.